



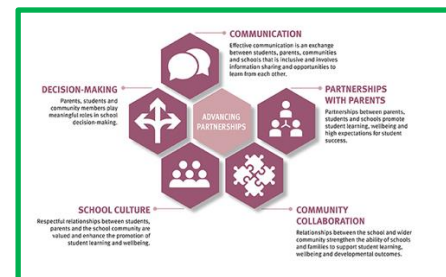
Parent and Community Engagement Framework



Parent and Community Engagement Framework

At Banana State School, we continue to review and strengthen our approaches in recognition of the evidence that parent and community engagement has a positive effect on students' wellbeing and achievement.

Our Parent and Community framework outlines our approaches to the five key elements of parent and community engagement to make a positive difference in our students' education.



Communication	Partnerships with Parents	Community Collaboration	Decision-making	School Culture
<p><i>Effective communication is an exchange between students, parents, communities and schools that is inclusive and involves information sharing and opportunities to learn from each other.</i></p>	<p><i>Partnerships between parents, students and schools promote student learning, wellbeing and high expectations for student success.</i></p>	<p><i>Relationships between the school and wider community strengthen the ability of schools and families to support student learning, wellbeing and developmental outcomes.</i></p>	<p><i>Parents, students and community members play meaningful roles in school decision-making.</i></p>	<p><i>Respectful relationships between students, parents and the school community are valued and enhance the promotion of student learning and wellbeing.</i></p>
<ul style="list-style-type: none"> Engaging in regular communication with the community through fortnightly newsletter, the school sign, school website and Facebook page. Hosting parent meetings to discuss significant school issues and classroom organisation. Providing opportunities for families to observe student learning and celebrate student achievement. Utilising the SMS4Schools messaging service to support connection and communication with parents. Ensuring communication is positive, accurate, meaningful and respectful to nurture a shared belief in high expectations for all students. Making informal contact a deliberate part of parent and community engagement so that school staff and family/community members can get to know each other and build respect and trust over time. 	<ul style="list-style-type: none"> Involving parents in the review of their child's performance in reading, spelling, numeracy and other core priorities. Organising parent-teacher meetings and information sessions throughout the year. Encouraging all staff to model best practice by being friendly, caring and welcoming to parents to create a supportive environment and positively influence the behaviour of students. Reporting to the P&C Association 2/3 times each term to provide updates and collaboratively plan to promote student wellbeing. Offering Breakfast/Brunch Club once per week for all students to promote the wellbeing of every student. Organising a Pre-Prep Transition program annually to build partnerships with new parents. Hosting a community Playgroup to promote wellbeing and student learning in the Early Years. 	<ul style="list-style-type: none"> Establishing and developing partnerships with community members and hosting community events such as ANZAC Day services, the Variety Bash, NAIDOC week and local sporting events. Hosting a weekly playgroup for local pre-school aged children. Writing articles for local newspapers and publications which promote student learning and school activities. Working with the Moura community for a high school transition programme, AngloAmerican activities and using the swimming pool for HPE. Working with our Adopt-a-Cop from the Moura Police. Participating with other small schools in technology classes conducted by the IMPACT Centre - Brisbane Distance Education. Annual first aid training provided by the Queensland Ambulance Service. 	<ul style="list-style-type: none"> Supporting and encouraging active participation in the school's Parents and Citizens' Association and engaging with them when reviewing school policies. Providing parents and community access to training and workshops such as those hosted by P&Cs Queensland. Involving parents and the school community in developing the Student Code of Conduct to align the behaviour expectations of the school and community to build a shared understanding of what is expected. Building the capability of students to be leaders in the decision-making process through the Student Council. Acknowledging and responding to parent feedback through the implementation of collaborative decision-making. Using the School Opinion Survey as a database to plan and act upon parent feedback. 	<ul style="list-style-type: none"> Ensuring respectful relationships between students, parents and the school community are valued. Encouraging the school community to embrace their indigenous heritage and cultural traditions such as engaging in NAIDOC week and connecting with local Elders. Supporting student wellbeing through engagement with local police and community leaders. Collaborate with staff to build mutually respectful relationships across the school community and encourage staff to build relationships that will enhance student learning and wellbeing. Fortnightly parade with Acknowledgement of Country and National Anthem sung. Participating in community events - Australia Day, Banana Sports Committee Incorporated events. Organising a school camp to Canberra every three years.

Elaine Pelling

30th November 2020